

# NEW!

## FOUR POST CRA18 HEAVY DUTY RUNWAY ALIGNMENT LIFTS

18,000  
POUNDS  
CAPACITY



Shown:  
Model CRA18N010  
18,000 lbs. capacity



### VERSATILE DRIVE-ON LIFT SERVICE CARS, TRUCKS AND EVERYTHING IN BETWEEN

#### Engineering Excellence

Forward's U.S. engineers have decades of combined experience designing automotive lifts for service and repair shops. Forward's philosophy is to own our designs rather than use someone else's off the shelf product.

#### Product Integrity

21st century design tools allow us to create, control and validate our designs to ensure maximum performance. Forward lifts are rigorously tested to meet quality and durability standards. All product families are proof load tested to 1½ times rated capacity and rigorously cycle tested.

#### CRA18 Alignment Kit

Adjustable alignment kit components adapt to a wide range of vehicle wheelbases



Convert your CR18 4-post lift into a functional alignment lift.

- Retrofit existing flat top CR18 lifts with this alignment kit.

Shown:  
Part No. S100126 with  
optional stainless steel radius gauges

Engineered to perform... Built to last!

# FORWARD LIFT

# FOUR POST CRA18 18,000 lbs. capacity runway alignment lifts

1/2" steel cable for greater lifting capacity and durability

Self locking approach ramps engage in the rear when the lift is raised

Internal airline connections let two rolling jacks operate simultaneously.

Front wheel stops can easily be replaced with optional drive through ramps

All hydraulics and mechanical lifting components are concealed under the runway

Multi-position lock components allow lift to be level at any lock position

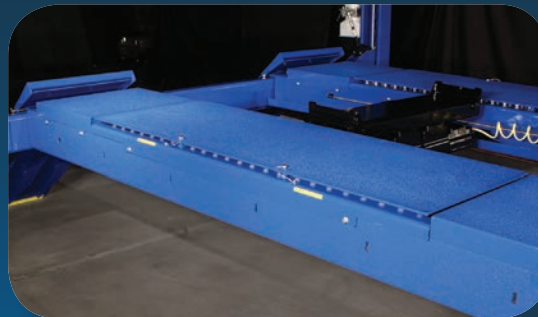
Single point latch release system releases all four column locks at one time.

Protective strips on ramp ends reduce noise and eliminate floor gouging.

Alignment lifts come standard with two carbon steel turning radius gauges - roll back bar allows the gauges to be placed in the front or back of the slot while keeping a flat runway surface.



Photo shows optional stainless steel turning radius gauges



Longer slip plate designed to accommodate a greater wheelbase range for two and four wheel alignments

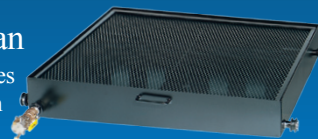


Part number RJ901000

Alignment lifts come standard with two 9,000 lbs. capacity rolling jacks

## Rolling Drain Pan

This lift accessory comes with splash guard, drain valve and dust cap. An eight foot drain hose with a quick disconnect fitting is also available.



Shown: 991564  
30 gallon capacity



Shown:  
Model CRA18N010  
18,000 lbs. capacity

Specifications	CRA18 CRA18-3
Max. Wheelbase	194" (4927mm) 230" (5842mm)
<b>CRA18</b>	
Max 2 Wheel Alignment	177" (4496mm)
Min/Max 4 Wheel Alignment	63" - 162" (1600 - 4115mm)
<b>CRA18-3</b>	
Max 2 Wheel Alignment	213" (5410mm)
Min/Max 4 Wheel Alignment	63" - 198" (1600 - 5029mm)
Rise	68" (1727mm)
Length Overall	22' 11 3/16" (6990mm) 25' 11 3/16" (7904mm)
Width Overall	11' 5 3/4" (3499mm)
Inside of Columns	121 1/2" (3086mm)
Length Between Columns	212" (5385mm) 248" (6299mm)
Height of Columns	6' 5 3/4" (1975mm)
Width of Runways	22" (559mm)
Height of Runways	7 1/2" (191mm)
Width Between Runways (min./max)	43" (1092mm) 46" (1168mm)
Lifting Capacity	18,000 lbs. (8165kg)
Motor	2 HP
Voltage Single Phase *	208v-230v
Time of Full Rise	100 seconds
Min. Bay Size	16' x 27' (4877 x 8230mm) 16' x 30' (4877 x 9144mm)

\* Optional 3-phase electrical available.  
Specifications subject to change without notice or liability



Forward Lift  
996 Industrial Drive  
Madison, IN 47250

Phone: 800.423.1722  
Fax: 812.273.7329  
www.forwardlift.com



Lit# CRA18\_2013.06

©2013 Forward Lift, Forward Lift is a brand of Vehicle Service Group, A Dover Company. All rights reserved. Unless otherwise indicated, Forward Lift, Vehicle Service Group, Dover and all other trademarks are property of Dover Corporation and its affiliates.